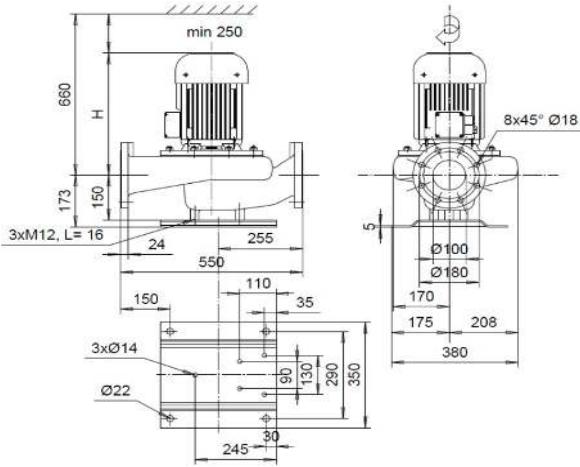


AKN-100/4

AKNH-100/4



50Hz	Motor 400V	P_{2N} [kW]	I_N [A]	I_{max} [A]	[kg]	H [mm]
	KP-90-2 N26	1,5	3,19	3,8	79	445
	KP-100-2 N26	2,2	4,71	6,8	90	470
	KP-100-2 N26	3	5,96	6,8	93	470
60Hz	Motor 380-400V(460-480V)	P_{2N} [kW]	I_N [A]	I_{max} [A]	[kg]	H [mm]
	KP-90-2 N26	1,5 (1,8)	3,29 (3,39)	3,8	79	445
	KP-100-2 N26	2,2 (2,6)	4,85 (4,93)	6,8	90	470
	KP-100-2 N26	3 (3,6)	6,13 (6,39)	6,8	93	470

