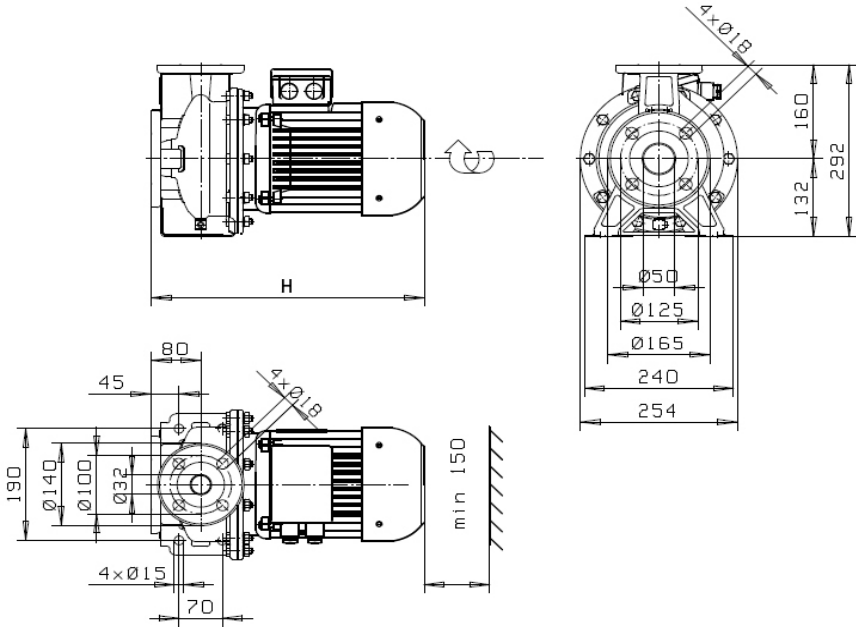


KD-32-160/2

K-32-160/2

KM-32-160/2



ZH09	P_{2N}	I_N 400V	m	H
	[kW]	[A]	[kg]	[mm]
	1,5	3,2	34	431
	2,2	4,5	36	432
ZH09	P_{2N}	I_N 400V	m	H
	[kW]	[A]	[kg]	[mm]
	3	5,6	38	471
	4	8,0	46	494

