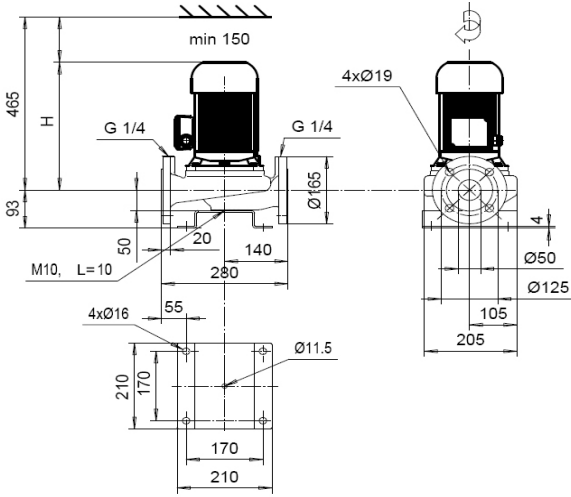


# L-50B/2

# LP-50B/2



ZH09	Motor 400V	$P_{2N}$ [kW]	$I_N$ [A]	$I_{max}$ [A]	[kg]	H [mm]
ZH09	KP-80-1 F15	1,1	2,16	2,7	31	345
ZH09	Motor 380-400V(460-480V)	$P_{2N}$ [kW]	$I_N$ [A]	$I_{max}$ [A]	[kg]	H [mm]
ZH09	KP-80-1 F15	1,1 (1,3)	2,25 (2,22)	2,7	31	345

