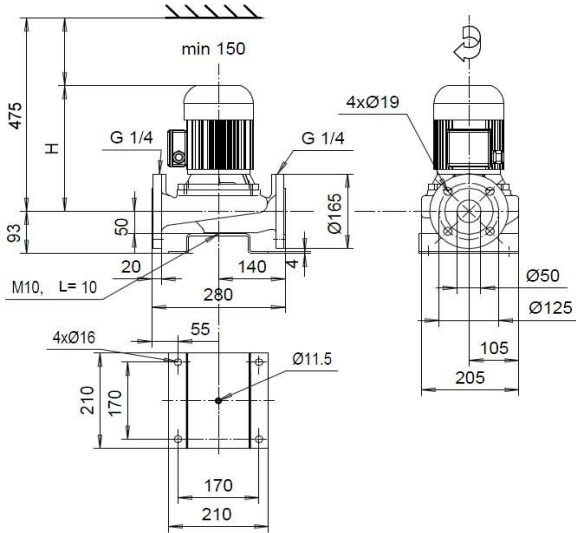


L-50D/4

LH-50D/4

LP-50D/4



ZH05	Motor 400V	P_{2N} [kW]	I_N [A]	I_{max} [A]	[kg]	H [mm]
	KP-80-2 F16	0,37	1,16	2,1	32	385
ZH09	Motor 380-400V(460-480V)	P_{2N} [kW]	I_N [A]	I_{max} [A]	[kg]	H [mm]
	KP-80-2 F16	0,37 (0,44)	1,15 (1,14)	2,1	32	385
	KP-80-2 F16	0,55 (0,66)	1,42 (1,45)	2,1	32	385

